



technology Elevators
Lifts in Style

Green Engineering



LIFT IS-technology



Interior Design Options
English Catalog



IS technology Lift

In **IS technology**, we care about our customer opinion. We try to give solid solutions to problems using our experience and knowledge in order to have the best positive solution every time.

IS technology is focused in providing quality products with competitive prices.

We design lifts mainly for low and medium rise buildings by using brand components and sophisticated technics in order to deliver high quality complete elevators.

IS technology great advantage is flexibility in special projects and our big range of options in interior design for cabins and fixtures.



In **IS technology** we can design, produce, control and deliver a Complete Lift in 4-5 Working Weeks after drawings approval.

- 3000m² warehouse in industrial area of Thessaloniki with easy access. Loading of a full track needs approximately 4 Hours totally for complete Loading and Paperwork.
- Detailed Packing List, Checked by 2 independent authorities
- Complete Documentation (Drawings, Technical Study, Installation Manuals, Certificates) in English.
- Special Packing to secure goods from damages
- Compliance with EN81.1, EN81.2, EN81.28, EN81.70, EN81.71, EN81.72, EN81.73



IS technology Marketing

Knowledge and experience of **IS technology** engineers provided us with the ability to steady increase our exports in very competitive and demanding markets.

We support our exports with great responsibility in all stages, before and after sale.

IS technology uses **Environmental Friendly** methods in design and production to achieve at the end high quality, performance, functionality and reliability in vertical transportation.



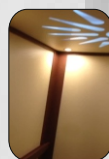
Skopje
Macedonia



Москва
Russia



Москва
Russia



Москва
Russia



Москва
Russia



Москва
Russia



Харків
Ukraine



Pristina
Kosovo



Pristina
Kosovo



Limasol
Cyprus



Limasol
Cyprus



Limasol
Cyprus

A list of **Reference Projects** that have been successfully completed in Regions that **IS technology** keeps commercial presence.

Elevators with nominal loads from **300 to 3500kg**, **indoor or outdoor** installation, **with or without machine room**, in **high or medium rise** buildings.

A wide range of Projects that are working nonstop daily and serves a large number of passengers.



Skopje
Macedonia



Skopje
Macedonia



Skopje
Macedonia



Skopje
Macedonia



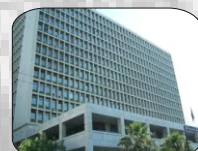
Skopje
Macedonia



Heracleon
Greece



Athena
Greece



Thessaloniki
Greece



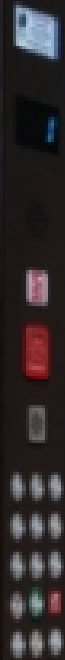
Chania
Greece



Athena
Greece



BASIS (EPOXY)





Powder Coated Cabins - Epoxy

Model: BASIS

BASIS FIME-SATINE

- ▶ Ceiling "Meandros" Inox brushed
- ▶ Elastic Floor 2Φ G819
- ▶ Hand Rail Inox Brushed K02
- ▶ Corners, COP, Inox brushed
- ▶ Cabin Panels Finish, Powder Coated "FIME"



BASIS GREEN-TITANIUM

- ▶ Ceiling "Spiral" Titanium
- ▶ Elastic Floor 2Φ G819
- ▶ Hand Rail Inox Brushed K02
- ▶ Corners, COP, TITANIUM
- ▶ Cabin Panels Finish, Powder Coated "LIGHT GREEN"



BASIS TITANIUM-RUST

- ▶ Ceiling "Vergina" TITANIUM
- ▶ Elastic Floor 2Φ G825
- ▶ Hand Rail Inox Brushed K02
- ▶ Corners, COP, RUST
- ▶ Cabin Panels Finish, Powder Coated "TITANIUM"



BASIS BEIGE-TITANIUM

- ▶ Ceiling "Meandros" TITANIUM
- ▶ Tile Floor BEIGE
- ▶ Hand Rail Inox Brushed K02
- ▶ Corners, COP, TITANIUM
- ▶ Cabin Panels Finish, Powder Coated "BEIGE"



BASIS BEIGE-RUST

- ▶ Ceiling "Chess" RUST
- ▶ Tile Floor RUST
- ▶ Hand Rail Inox Brushed K02
- ▶ Corners, COP, RUST
- ▶ Cabin Panels Finish, Powder Coated "BEIGE"

BASIS CABIN is consisted of an external metal layer (Body) of galvanized steel and an internal metal layer of powder coated steel (Cabin Panels), combined together.

As a result **BASIS CABIN** has improved noise and vibration insulation.

The high Quality paint job ensures a high aesthetics result.

BASIS CABIN is the standard option provided from **IS technology** for public or private passenger elevators.



VENUS (LAMINATO)



VENUS-9574

- ▶ Ceiling "Minimal" Inox Mirror
- ▶ Elastic Floor 2Φ-A G856
- ▶ Hand Rail Inox Mirror K05
- ▶ Corners, COP, Inox Mirror
- ▶ Coating 9574 Plastic Laminate





IS technology Cabins

Plastic Laminate with Inox Details Cabins Model: VENUS (LAMINATO)

VENUS-9975

- ▶ Ceiling "Minimal" Inox Mirror
- ▶ Elastic Floor 2Φ-A G856
- ▶ Hand Rail Inox Mirror K05
- ▶ Corners, COP, Inox Mirror
- ▶ Coating 9975 Plastic Laminate



VENUS-9575

- ▶ Ceiling "Minimal" Inox Mirror
- ▶ Elastic Floor 2Φ-A G856
- ▶ Hand Rail Inox Mirror K05
- ▶ Corners, COP, Inox Mirror
- ▶ Coating 9575 Plastic Laminate



VENUS-585

- ▶ Ceiling "Minimal" Inox Mirror
- ▶ Elastic Floor 2Φ-A G856
- ▶ Hand Rail Inox Mirror K05
- ▶ Corners, COP, Inox Mirror
- ▶ Coating 585 Plastic Laminate



Plastic Laminate Options



VENUS-313

- ▶ Ceiling "Minimal" Inox Mirror
- ▶ Elastic Floor 2Φ-A G856
- ▶ Hand Rail Inox Mirror K05
- ▶ Corners, COP, Inox Mirror
- ▶ Coating 313 Plastic Laminate



URANUS (INOX)





Stainless Steel Cabin Model: URANUS (INOX)

URANUS-BRUSHED 430

- ▶ Ceiling "Minimal" Inox Mirror
- ▶ Elastic Floor 1.50Φ G810
- ▶ Hand Rail Inox Mirror K05
- ▶ Corners, COP, Inox Mirror
- ▶ Coating Inox-430 Brushed



URANUS CABIN is manufactured with the same techniques as BASIS and VENUS, but the internal coating is now stainless steel.

The standard selection for **URANUS** is Brushed Inox for the Cabin and Door Panels and Mirror Inox for the details (COP, Ceiling, Corners, Hand rail).

The **URANUS CABIN** is the most economical solution from the **Luxurious Cabins** Category.

IS technology provides to the costumer 3 more standard options for the stainless steel (Checks, Leather and Linen) and there is also an extra option of Gold Mirror.

For more extreme solutions we can use all available Inox types from "Steel Color" - Italy, for **CUSTOM URANUS CABIN**

Inox Options

INOX CHECKS



INOX LINEN



INOX LEATHER



ARMONIA





Horizontal Wooden Panels Combined With Inox Model: ARMONIA

ARMONIA-BROWN

- ▶ Ceiling "Meandros" Inox Mirror
- ▶ Elastic Floor 2Φ G819
- ▶ Hand Rail Inox Mirror K02
- ▶ Corners, COP, Inox Mirror
- ▶ Coating: Horizontal Segments of Brown Wood Separated by Inox Mirror Stripes



ARMONIA CABIN is in the **Luxurious Cabins** Category. The interior of the Cabin is consisted of wooden panels which are installed in a horizontal position and between them are located strips of mirror stainless steel.

IS technology offers **ARMONIA CABIN** in three standard color options (Brown, Walnut and Wenge). Customization upon clients demand in any other wood type or color is available.

ARMONIA Model is recommended for luxury buildings and large cabins.

The interior design of **ARMONIA** creates a warm and pleasant feeling to the passenger. Additionally, if the architecture of the building is based on a combination of wood and metal, then **ARMONIA CABIN** can be a Perfect choice, blending harmoniously with the Surroundings.



ARMONIA-WALNUT

- ▶ Ceiling "Meandros" Inox Mirror
- ▶ Elastic Floor 2Φ-A G856
- ▶ Hand Rail Inox Mirror K02
- ▶ Corners, COP, Inox Mirror
- ▶ Coating: Horizontal Segments of Walnut Wood Separated by Inox Mirror Stripes



ARMONIA-WENGE

- ▶ Ceiling "Meandros" Inox Mirror
- ▶ Elastic Floor 2Φ-A G850
- ▶ Hand Rail Inox Mirror K02
- ▶ Corners, COP, Inox Mirror
- ▶ Coating: Horizontal Segments of Wenge Wood Separated by Inox Mirror Stripes



AMBASSADOR





Vertical Wooden Panels Combined With Inox Model: AMBASSADOR

AMBASSADOR - DARK

- ▶ Ceiling "Minimal" Inox Mirror
- ▶ Granite Floor 22mm
- ▶ Hand Rail Inox Mirror K05
- ▶ Corners, COP, Inox Mirror
- ▶ Coating: Vertical Segments of Dark Brown Wood Separated by Inox Mirror Stripes



AMBASSADOR - WALNUT

- ▶ Ceiling "Minimal" Inox Mirror
- ▶ Elastic Floor 2Φ-A G856
- ▶ Hand Rail Inox Mirror K02
- ▶ Corners, COP, Inox Mirror
- ▶ Coating: Vertical Segments of Walnut Wood Separated by Inox Mirror Stripes



AMBASSADOR - 975

- ▶ Ceiling "Minimal" Inox Mirror
- ▶ Elastic Floor 2Φ-A G856
- ▶ Hand Rail Inox Mirror K02
- ▶ Corners, COP, Inox Mirror
- ▶ Coating: Vertical Segments of Light Brown Wood (975) Separated by Inox Mirror Stripes

The interior of **AMBASSADOR CABIN** is consisted of wooden panels and between them strips of mirror stainless steel. In contrast with **ARMONIA CABIN** the wooden panels are mounted vertically.

AMBASSADOR CABIN is the most luxury and expensive model from all **Luxurious Cabins** and an ideal choice for high aesthetics and prestige elevators.

IS technology offers **AMBASSADOR CABIN** in three standard color options (Dark Brown, Walnut and Light Brown). Customization upon clients demand in any other wood type or color is available.



IS technology Cabins



HELIOS (PANORAMIC)

IS technology . Elevators





IS technology Cabins

Handmade Glass Cabin Combined With Inox Model: HELIOS (PANORAMIC)

HELIOS - P01

- ▶ Ceiling "Vergina", Inox Mirror
 - ▶ Granite Floor 22mm
 - ▶ Hand Rail Inox Mirror K04
 - ▶ Corners, COP, Inox Mirror
 - ▶ Cabin Panels from Triplex Safety Glass
- Glass



HELIOS CABIN frame is made of stainless steel in both internal and external side of the cabin.

Transparent Triplex Safety Glass panels can be fitted in one, two or three cabin walls, depending on the project.

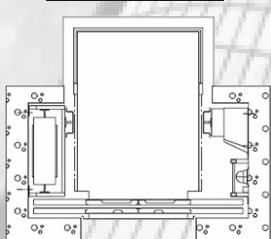
Additionally Top and Bottom Inox Covers can be supplied for **HELIOS** if the project requires the Cabin machinery to be hidden

HELIOS Model is a hand-made cabin designed for high prestige projects.

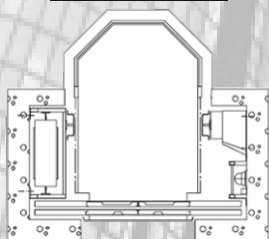


HELIOS CABIN Options

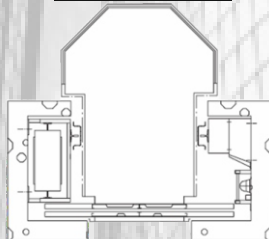
HELIOS-P01



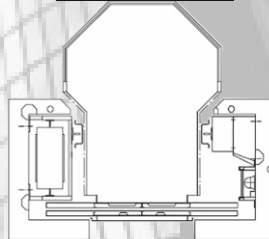
HELIOS-P02



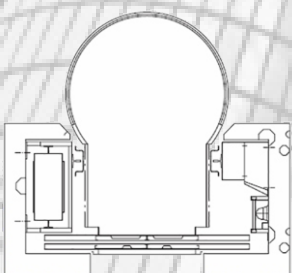
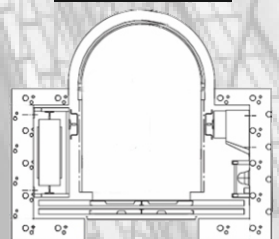
HELIOS-P03



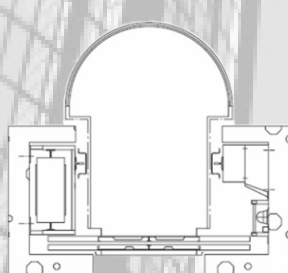
HELIOS-P04



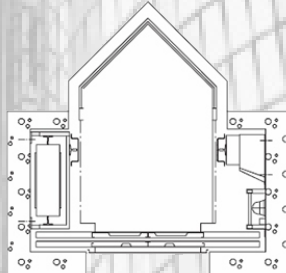
HELIOS-P05



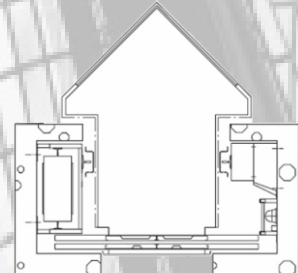
HELIOS-P06



HELIOS-P07



HELIOS-P08

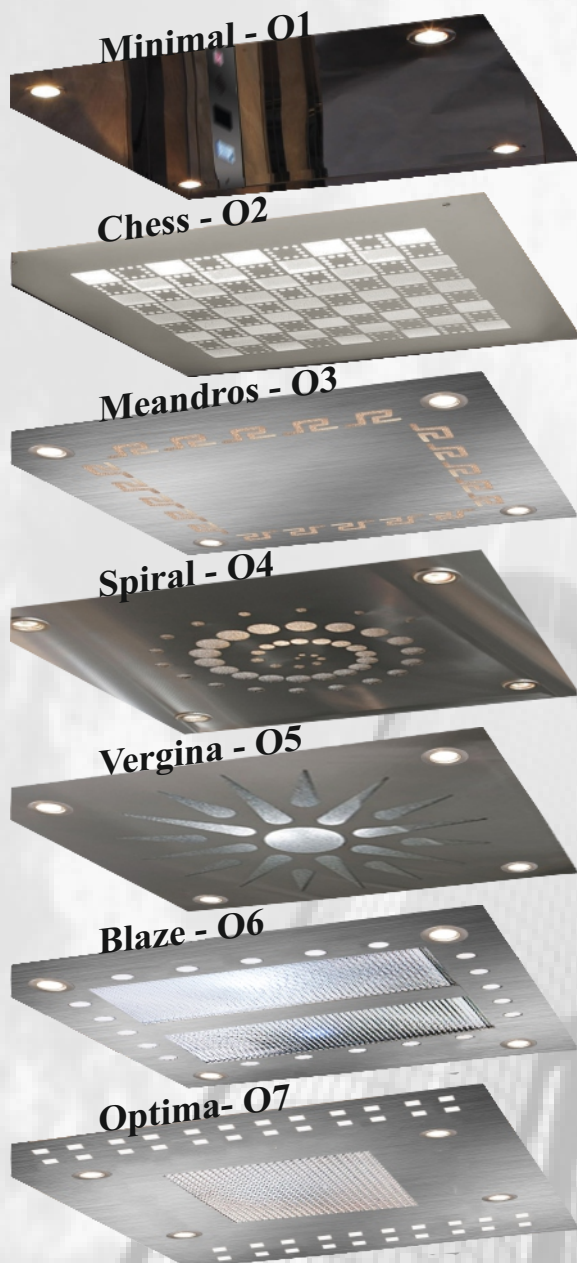


HELIOS-P09

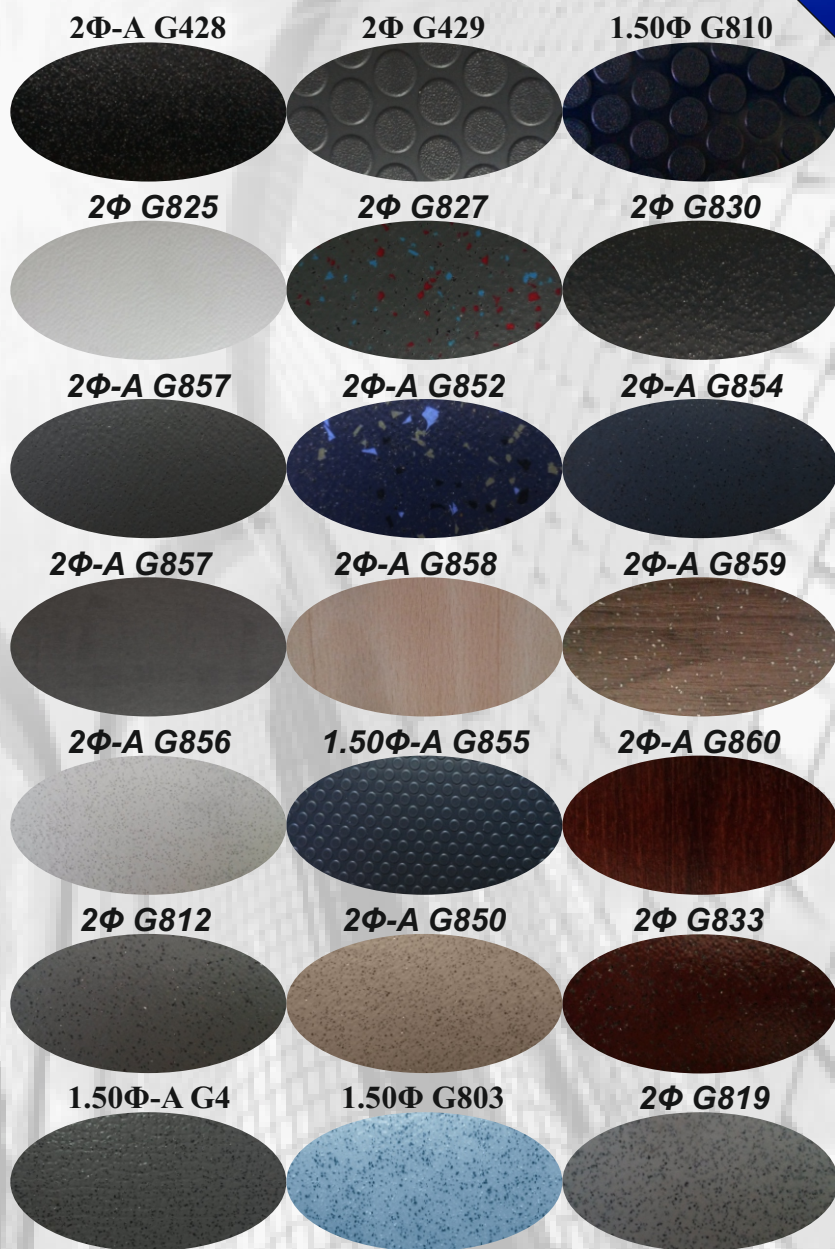




Ceilings



Elastic Floors



Hand Rails





Standard Options



BVH430A



BVL111



BAS12B



BXG165



BXG167



BXG165/167
Full Collective
or
Access Key

COP Panel Description:

Dimension: 200X2000MM

Finish: Inox / Powder Coated

Standard Settings:

- COP-BB: BVH430A display and blue button BAS12B
- COP-BR: BVL111 display and red buttons BAS12R

IS technology standard LOP are from BXG 16 Series.

Surface mount, Inox Brushed finish with 2 back light options (Red and Blue).

BXG 16 Series options:

- Floor Indication & one Button
- Floor Indication & two Buttons
- Duplex Indication & One or Two Buttons
- Direction Arrows & one Button
- Direction Arrows & two Buttons
- Duplex Arrows & One or Two Buttons

Additional LOP Options



BXG231-A



BXG231-B



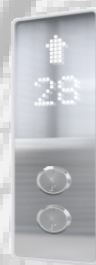
BXG291



BZG291



BXG301



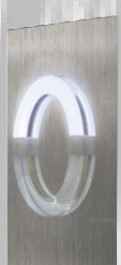
BXG274-B



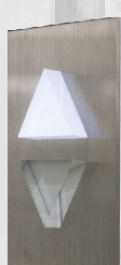
BXG273



BXG274-A



BFK215



BFK212

TFT Options



BVT815-15"



BVT607.0 - 7"

Button Options

BAS174



MA1506



BAS251



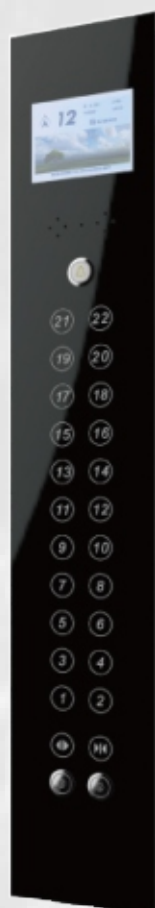
BAS120



BA401



Luxury Line - Customized



Black Glass Panels with Black Push Plate Buttons and White Led Light

BCK191

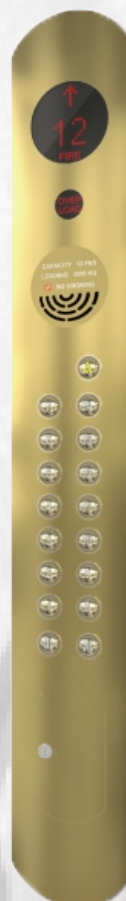
BCK191



Inox Combined with Black Plexi Glass With Square buttons and Red Back Light

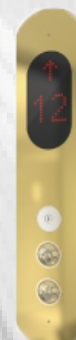
BCK131

BCK131



Gold Mirror Panel With Round Gold Mirror Push Plate Buttons and Red Back Light

BC215



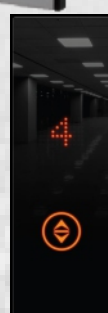
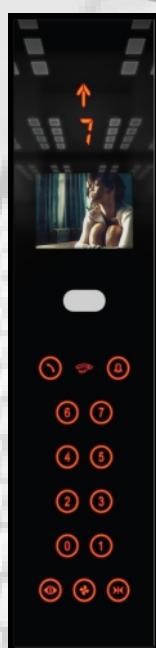
BX215



White Glass Panel With Round Buttons and White Back Light. Red Light Dot Matrix Displays.

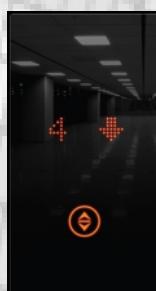
BXG401

BCG401

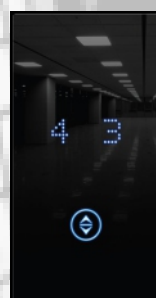
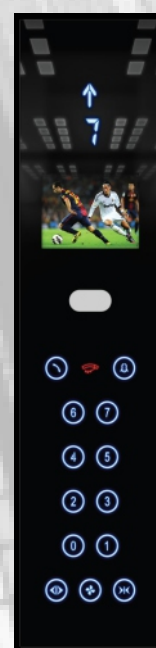


60 Series

*Glass panels with **touch-sensitive buttons**, **TFT screen** option for MPEG video Playback, **Duplex** or **Simpex** LOP operation, with **Blue or Red** Button Back light.*



61 Series



*A complete range of touch control panels is offered by **IS technology***

*A **Detailed** and **Stylish Finish** that satisfies even the most demanding passenger*



IS technology . Lift Manufacturer



IS technology

HEAD QUARTERS:

PERREVOU 37, THESSALONIKI

54352, GREECE

Tel.: +30 2312 209009

Fax.: +30 2310 943169

info@istechnology.gr

www.istechnology.gr