



ISL-V2 Lift Controller

Standard Lift Series

Product Description

ISL_V2 Series controllers use the **ASTRA_V2** PCB Board. ISL_V2 series controllers are simple but extremely reliable products, used for low rise buildings up to 8 stores high.

ISL_V2 features:

- Up to 8 stops Down Collective
- Easy parameter and Fault log access with integrated LCD and on board push buttons
- Fully complied with EN81.1-2 regulations
- Automatic rescue function (Standard in hydro version)
- Only for machine room versions
- Special VVVF for Hydraulic applications (Optional)
- Very Simple operation and maintenance
- Competitive price

Technical specifications

ISL_V2 controllers comes with a **2 years guaranty** and are produced for a long life trouble free operation.

Electrical features:

- Safety Voltage: 110Vac / 48Vdc
- Lightning Output: 230Vac / 10A
- Calls / Indicators Voltage: 24 Vdc

Components:

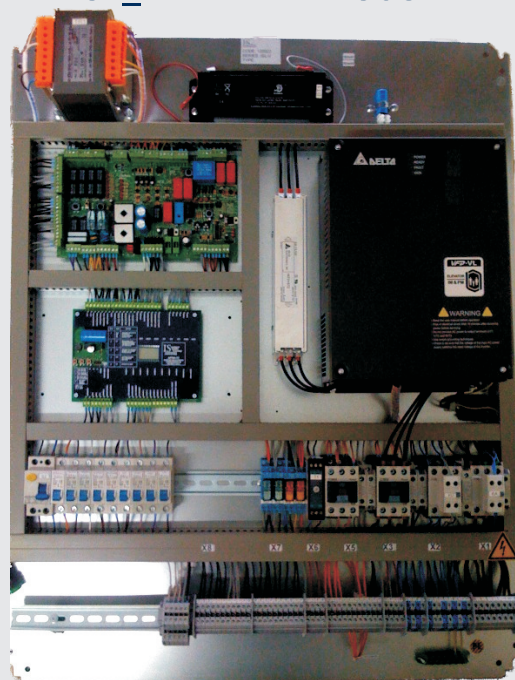
Din Rail MCB: Cat C, China
Micro Relay: Finder, 8-10A, Germany
Main Contactors: LG, Cat AC3, Korea
VVVF: DELTA VFD-ED (Traction) / VFD-E-M LIFT (Hydro), Cat Lift, Manufactured in Holland and Slovakia

Factory - Head Office:

Perrevou 37, Thessaloniki
54 352, Greece
Tel.: 0030 231 220 9009
Fax: 0030 2310 943 169

info@istechology
www.istechology.gr

ISL_V2 VVVF + RESCUE



ISL_V2 HYDRO Y/D

