



Augusta EVO

THE NEW WITTUR RESIDENTIAL DOOR



safety *in* **motion**[™]

www.wittur.com



AUGUSTA EVO is the affordable Wittur quality door for the residential market

Augusta EVO



1 Easy and fast installation

- Reduced depth and height dimensions
- 3D adjustment possibilities to overcome offset shaft and irregular field conditions
- Fast assembly time



2 High comfort and good performance

- Low vibrations due to assembly design
- Same rollers as HYDRA series guarantee low operating noise
- Integrated reclosing device
- Proven reliability and durability of key components



3 Easy maintenance

- Easy access for maintenance parts
- Same components for central and side opening version
- Reduced stock and spare part management



4 Modular recyclable packaging

- Cardboard modular packaging
- All packaging materials are recyclable



5 Certifications

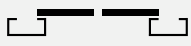


AUGUSTA EVO is designed to comply with the Lift Directive and the EN 81-20/50 norms, and it is available with fire-rated EN 81-58 E120 and EW 60 certifications, and Russia GOST E30 certification.

6 Finishes

- Prime finish powder painted RAL 7032
- Powder painted RAL
- Stainless steel
- Skinplate



Production range

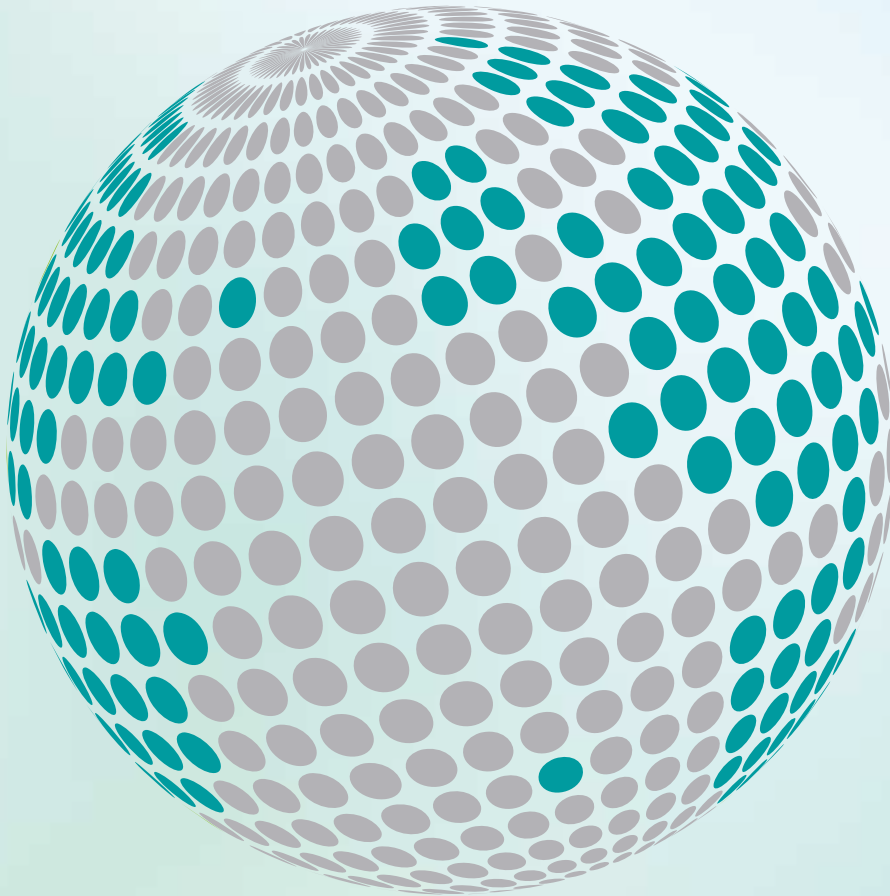
Landing doors				
Sill width (mm)	Type	Illustration	Clear Opening (mm)*	Clear Height (mm)
40	01/C		700	
80	11/R		800	2000
			900	2100
80	11/L		1000	2200
			1100	

* Intermediate C.O. and C.H. are available in steps of 50 mm



WITTUR

YOUR GLOBAL PARTNER FOR COMPONENTS,
MODULES AND SYSTEMS IN THE ELEVATOR INDUSTRY



safety **in** *motion*™

www.wittur.com

More information
about Wittur Group
available on-line.

